

Insulated sliding doors and electric drives

■ SCR industrial | ■ SCR-lite-track | ■ Controlled atmosphere/ULO | ■ Double leaf | ■ Meat rail



SCR Industrial sliding door



SCR Industrial



Leaf: thicknesses of 80 / 100 / 120 / 140 mm.

- Finishes: white painted, PVC, stainless steel, polyester or Formica with anodised aluminium surrounding
- PUR or PIR insulation with a density of 40-45 kg/m³
- Rubber gasket around the perimeter made of sturdy PVC to ensure the doors close hermetically

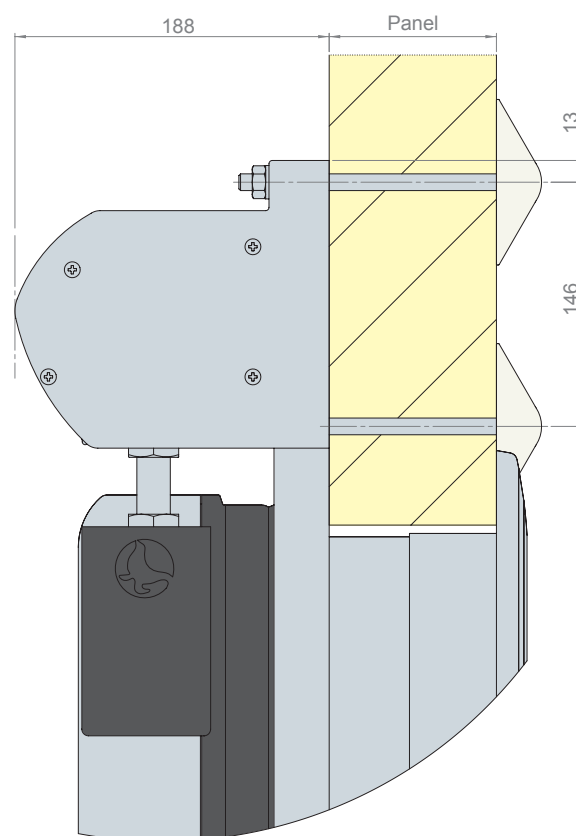
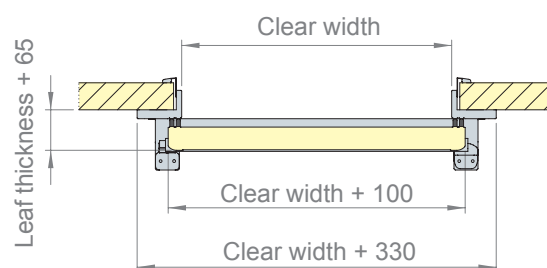
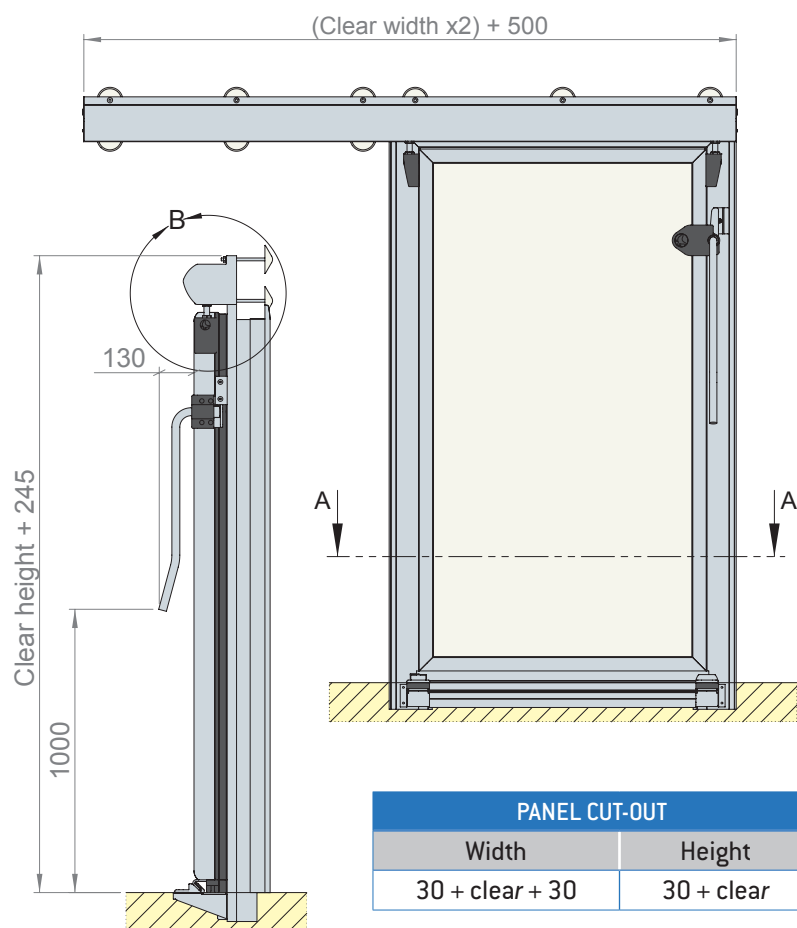
Industrial frame eliminating the thermal bridge effect prepared for assembly on panel or brickwork. Made of silver polished anodised aluminium, 15 micron.

Doors for freezing areas (–20°C/ –40°C) have a heater cable around the perimeter and inside the threshold plate.

SCR Track Industrial Version designed exclusively by REPRO Group.

- Track made of anodised aluminium with railway and bearings made of stainless steel
- External and internal handle of own design
- Optional: Electric drive designed for SCR track

Accessories: colors of our standard color card or RAL card, vision panels for positive and negative temperature doors, lock with internal unlocking, split rail (see last sheet), bumpers in different finishes, lower front track to be fixed on wall or panel.



Stainless Steel Version

Optional: top cover of the SCR track made of stainless steel. Frame with thermal bridge interrupted thermal bridge made of stainless steel AISI-304 or AISI-316.

SCR-Lite-Track sliding door



SCR Lite

Leaf: thicknesses of 60 / 80 / 120 mm.

- Finishes: white painted, PVC, stainless steel, polyester or Formica with anodised aluminium surrounding
- PUR or PIR insulation with a density of 40-45 kg/m³
- Rubber gasket around the perimeter made of sturdy PVC to ensure the doors close hermetically

Lite-Frame prepared to be assembled on panel or brickwork. Made of silver polished anodised aluminium, 15 micron, with PVC profile to interrupt the thermal bridge.

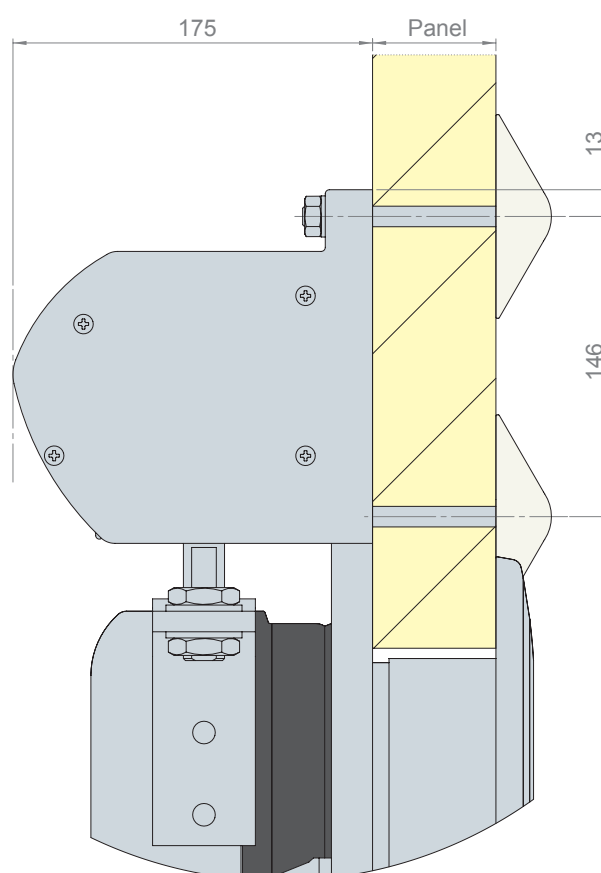
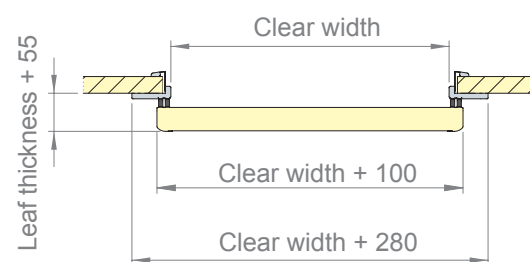
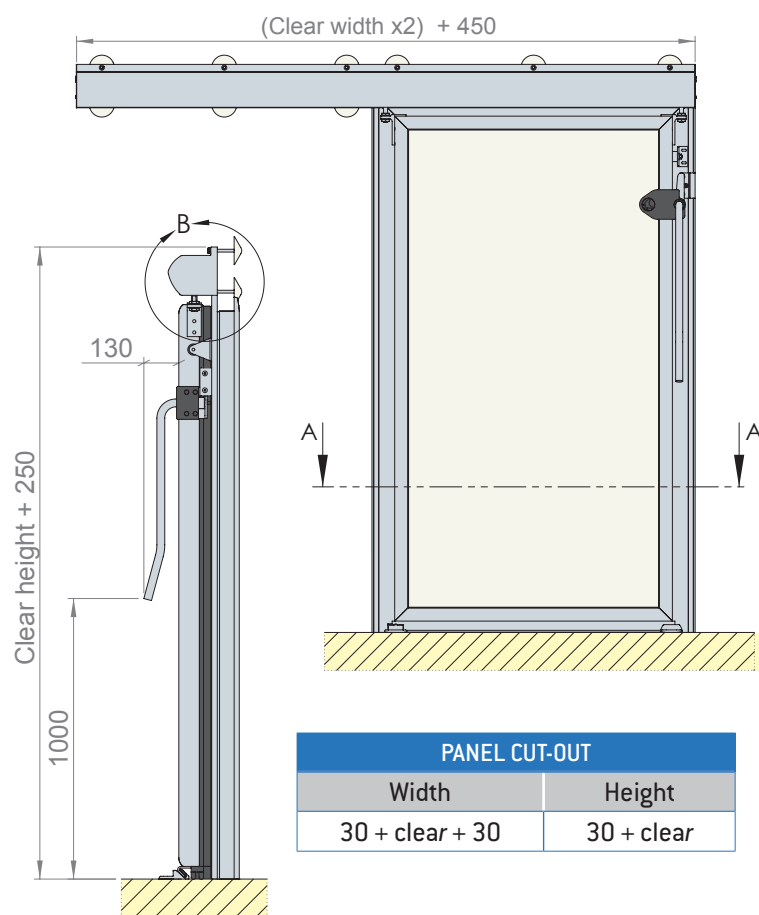
Doors for freezing areas (-20°C) have a heater cable around the perimeter and inside the threshold plate.

SCR-Lite Track designed exclusively by REPRO Group.

- Track made of anodised aluminium with bearings made of stainless steel
- External and internal handle of own design

Accessories: colors of our standard color card or RAL card, vision panels for positive and negative temperature doors, lock with internal unlocking, split rail (see last sheet), bumpers in different finishes, lower front track to be fixed on wall or panel.





Stainless Steel Version

Optional: top cover of the SCR-Lite track made of stainless steel. Frame with thermal bridge interrupted thermal bridge made of stainless steel AISI-304 or AISI-316.

Controlled atmosphere/ULO

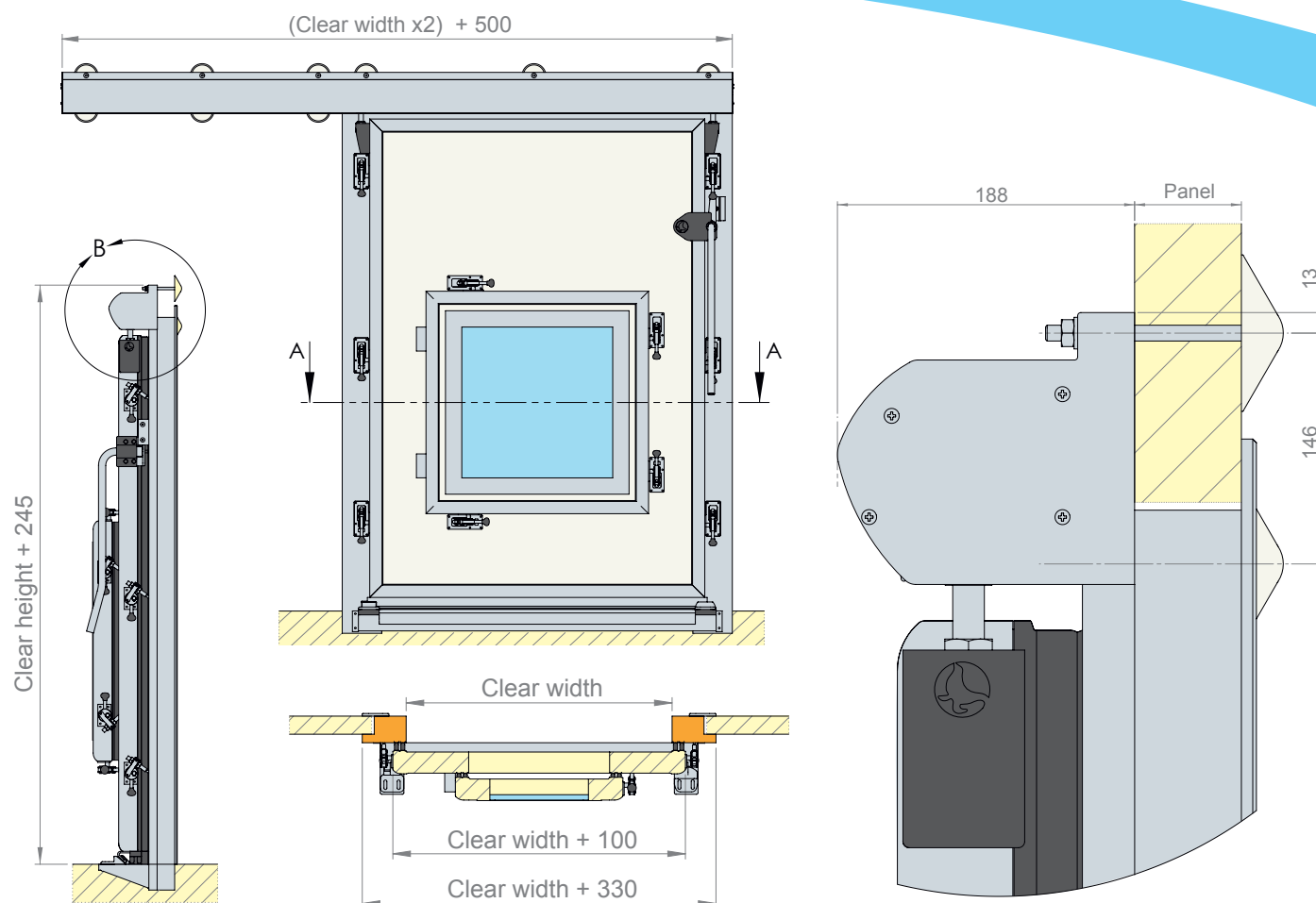


Leaf: thickness of 100 mm.

- Finishes: white painted, PVC, stainless steel, polyester or Formica with anodised aluminium surrounding
- PUR or PIR insulation with a density of 40-45 kg/m³
- Special controlled atmosphere gasket around the perimeter for hermetical closing
- Adjustable cremone bolts made of stainless steel
- Control trap made of glass with standard clear dimensions 680 x 680 mm

Frame made of wood covered with white painted steel, PVC covered steel or stainless steel. Frames prepared for assembly on panel or on brickwork.

SCR Track Industrial Version designed exclusively by REPRO Group.



PANEL CUT-OUT

Width	Height
$80 + \text{clear} + 80$	$80 + \text{clear}$

Stainless Steel Version

Optional: top cover of the SCR-Lite track made of stainless steel. Frame with thermal bridge interrupted thermal bridge made of stainless steel AISI-304 or AISI-316.



Insulated sliding doors

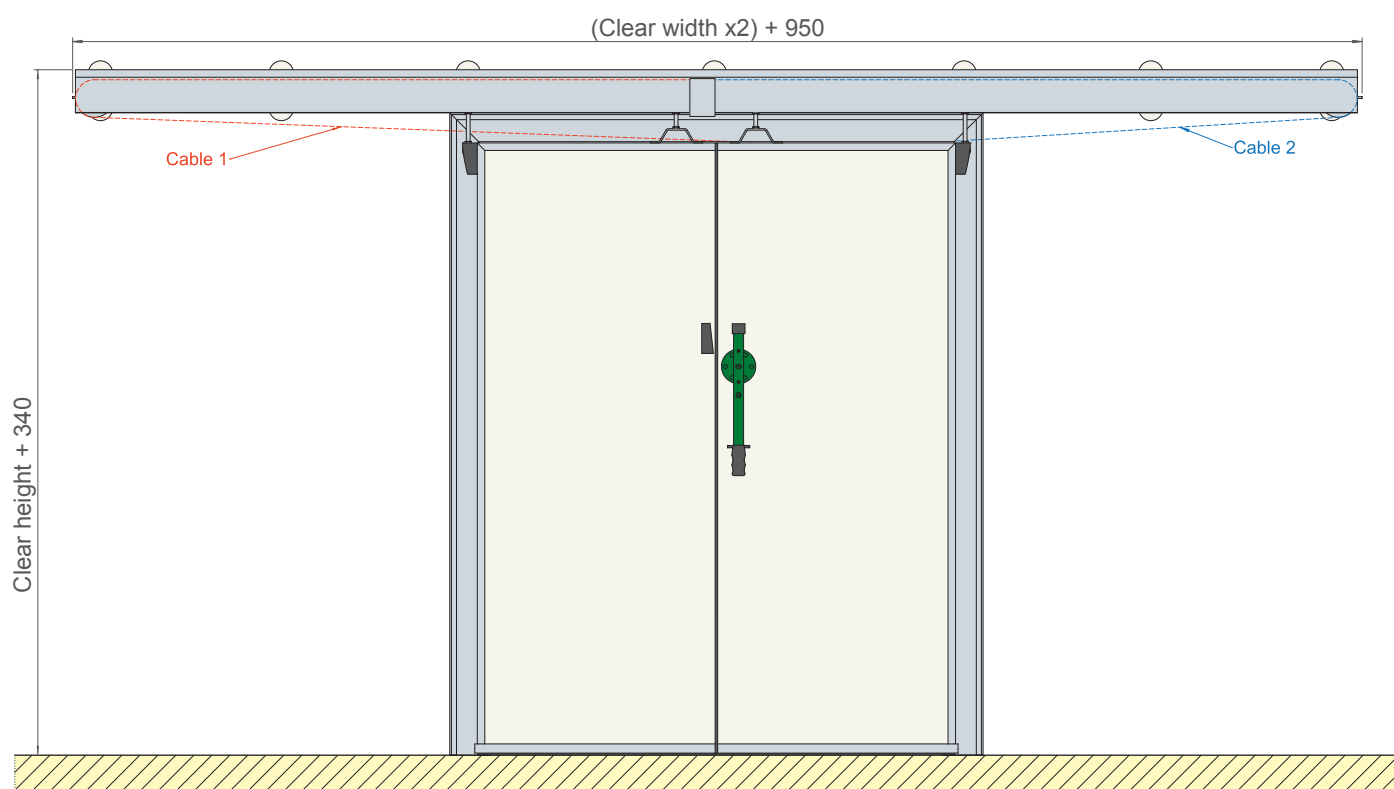


Double leaf sliding door

When required, we can produce all of our sliding door models as double leaf sliding doors.

Same characteristics as for the single leaf doors.

With or without electric drive.





Electric drive SCR

Electric drive designed by REPRO Group.

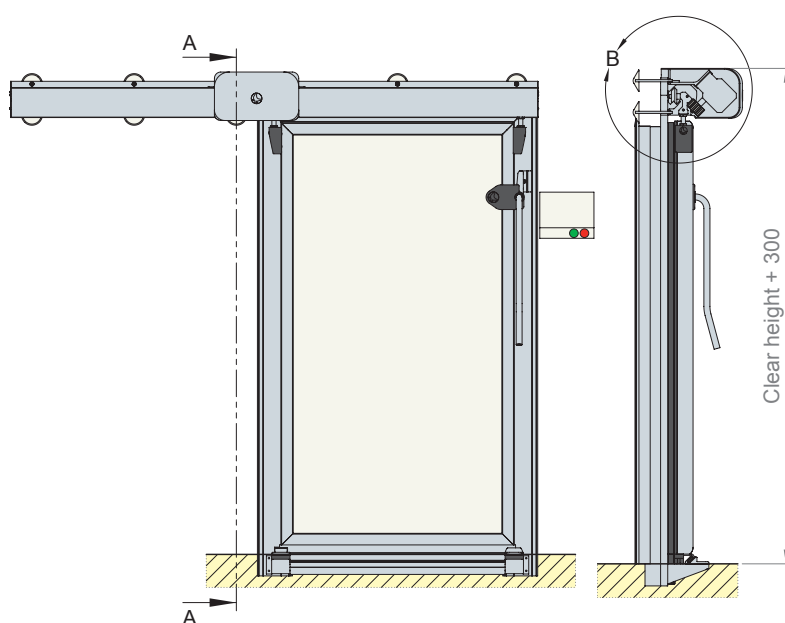
Program display in different languages.

Power 230V AC / 50-60Hz. Pluggable connection of all components.

Push button for opening and closing. Temporised closing programmable.

Push button for "man present" function.

Complies with norm EN 13241-1:2004+A1:2011 dossier 17/14108-456 by Applus.



LGAI Technological Center, S.A.
Carrius LAB - Ronda de la Font del Carme s/n
Pob. Sec. 18
E - 08193 Bellaterra (Barcelona)
T +34 93 567 20 00
F +34 93 567 20 01
www.applus.com

Applus[®]
laboratories

CE SIMPLIFIED TEST REPORT

Notified Body Nº 0170

17/14108-456S

Page 1/1

Belaterra: March 16th 2017

Applicant Reference / Test place: COMERCIAL INDUSTRIAL REPRO, S.L.
AVENIDA DEL MAR S/N
46410 SURECA
VALENCIA

Test date: March 9th 2017

TESTED MATERIAL
A POWER OPERATED SINGLE LEAF SLIDING DOOR, with horizontal movement, according to commercial reference "SCR", with dimension of leaf 1600 x 2120 mm (width x height) and weight of leaf 65 kg. Type of power operated activation mode by AUTOMATIC CONTROL and MANUAL.

TEST REQUESTED
Initial Type: Test according to the Standard UNE EN 13241-1:2004+A1:2011 "Industrial, commercial and garage doors and gates. Part 1: Products without fire resistance and smoke control characteristics".

CLASSIFICATION
The door tested has obtained the following results:

Characteristics	Requirements EN 13241-1:2003+A1:2011	Test Standard	Test Results
TEST'S ANNEX ZA			
Forces to power operated doors	4.3.3.	EN 12445:2001, ap. 5 and 7.3 EN 12445:2001, ap. 5.1.1.6	PASS
Safe opening (for vertically moving doors)	4.2.8.	EN 12605:2000 5.3.2 and 5.4.3. EN 12604:2000 4.3.2 and 4.3.4.	PASS

Applus[®]
laboratories

Alejandro Guberto Richards
Industrial Doors Department Responsible
LGAI Technological Center S.A.

1. This document has traceability with the file of the customer with the same number and date indicated in this document.
2. The results refer exclusively to the sample, product or material submitted to the Laboratory, just as it is informed in the section of received material and tested under the conditions indicated in the norms mentioned in this document.
Applus[®] guarantees that this work has been done within our Quality System requirements, having inspected contractual conditions and legal standard. In order to improve our programme of improvement we encourage you to send us any suggestion that you consider appropriate, addressing to responsible who sign this document or to Applus + Quality Manager: spain@applus.com
The reproduction of this document is only authorized if it is made in its totality. Electronically signed reports in digital format are considered original documents, as well as its electronic copies. Their printing has no legal validity.

Sliding doors with meat rail

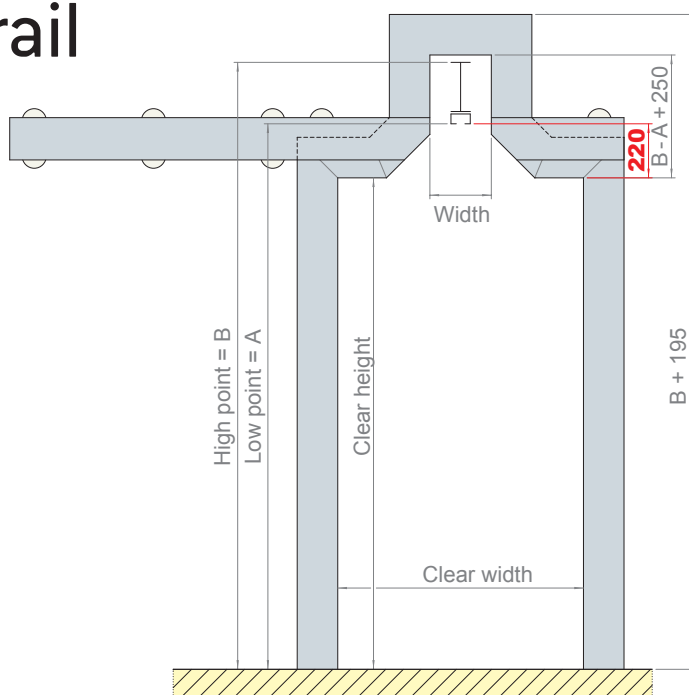


Doors can be realized with two types of meat rail cut-outs: split rail and swan neck, adaptable to any requirements of your installation.

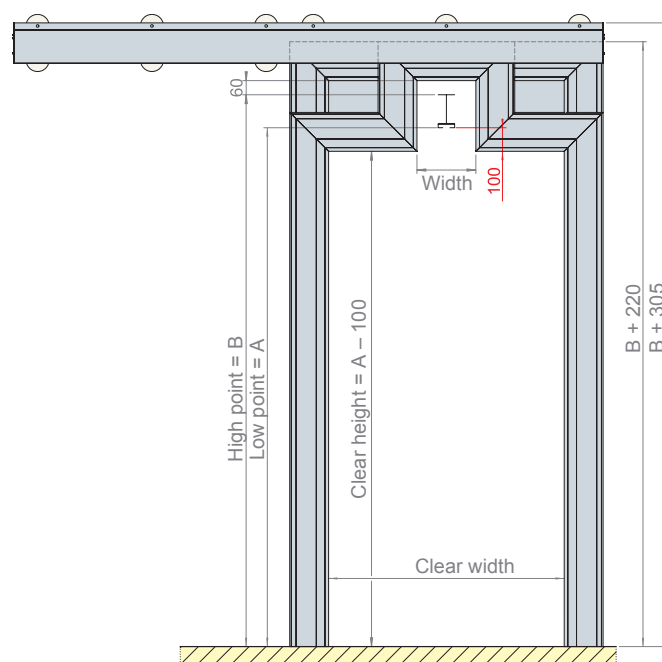




Meat rail cut-out split rail



Meat rail swan neck



Puertas frigoríficas Insulated doors Portes frigorifiques
Kühlraumtüren Soğuk oda kapıları أبواب معزولة



GRUPO repro



Grupo Repro

Avenida del Mar, s/n - Apartado de Correos 29

46410 SUECA (Valencia) Spain

Tel.: +34 96 171 80 05 - Fax: +34 96 170 09 00

www.repro.es - repro@repro.es